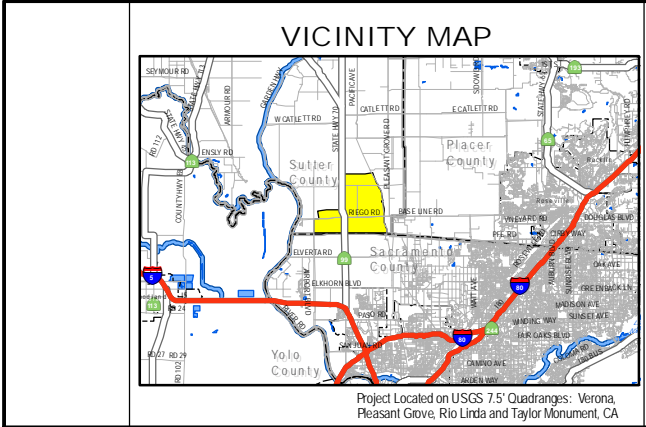
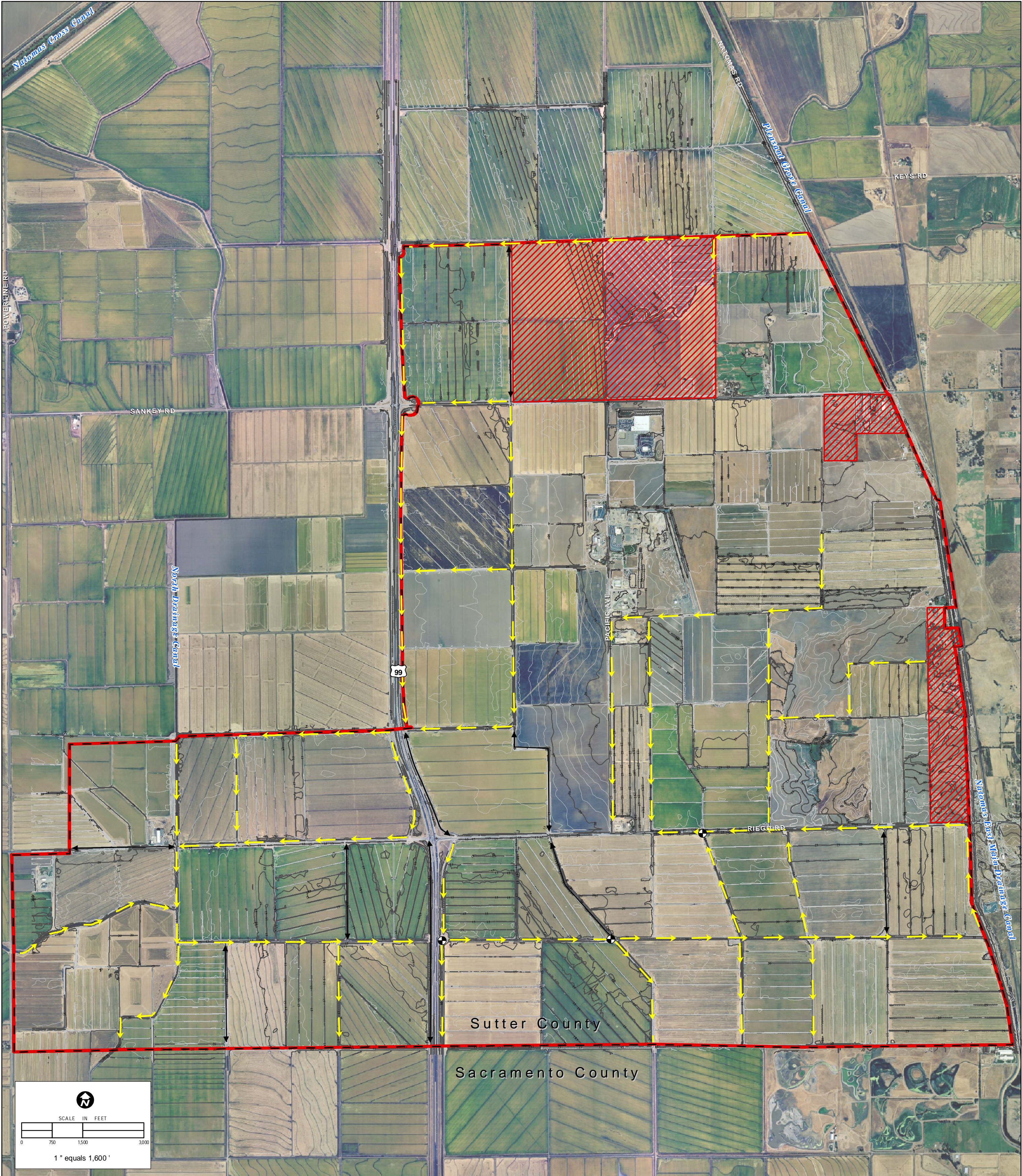


## ATTACHMENT D




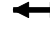

---

Canal and Ditch Flow Direction





TYPICAL CANAL AND DITCH FLOW DIRECTION <sup>2</sup>		
2005-186 Sutter Pointe Specific Plan		
Location: J:\GIS_Maps\2005-186_South_Sutter_Specific_Plan\	Map Name: sssp_flow.mxd	Project Number: 2005-186
Original Production Date: 07/20/06	Revision:	Project Manager: BALFPS
Printing Date: 09/10/07	Scale: 1" equals 1,600'	GIS Specialist: EK
 <b>ECORP Consulting, Inc.</b> ENVIRONMENTAL CONSULTANTS		
Headquarters: 2525 Warren Drive Rocklin, CA 95677 Ph: 916.782.9100	Oakland Office: 2100 Embarcadero, Suite 201 Oakland, CA 94606 Ph: 510.434.0150	Santa Ana Office: 1801 Park Court Place Building B, Suite 103 Santa Ana, CA 92701 Ph: 714.648.0630
		Redlands Office: 412 East State St. Redlands, CA 92373 Ph: 909.307.0046

NOTES	Map Features
Map Projection: California State Plane Zone II (NAD83)	<sup>1</sup> Boundaries
<sup>1</sup> Project Boundary: Wood Rodgers; Selected from ECORP Wetland Delineation.	 Project Boundary
Aerial Photo Source: Airphoto USA, Nov. 2002	 NAPOTS
<sup>2</sup> Represents typical flows which are manipulated based upon agricultural needs.	<b>Canal Flows - July, 2006</b>
	 Flow Direction
	 No Flow
	 Pumping Stations