

## Community Health Improvement Plan | Reducing Sexually Transmitted Infections

Overview

Data & Information

Workgroup Plan:  
Objective 1

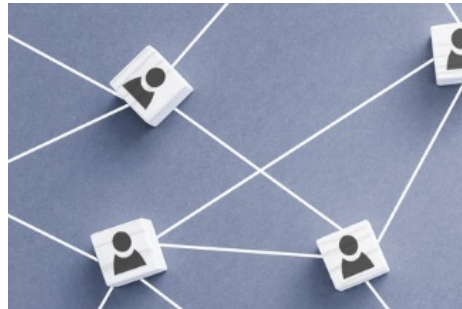
Workgroup Plan:  
Objective 2

# REDUCING SEXUALLY TRANSMITTED INFECTIONS

Vision: Reduce the incidence and burden of STIs for Sutter County residents.

*"The term sexually transmitted infection (STI) refers to a virus, bacteria, fungus, or parasite that has infected a person's body via sexual contact, whereas the term sexually transmitted disease (STD) refers to a recognizable disease state that has developed from an STI. Some stakeholders commonly use the term STI, and some commonly use the term STD. This STI Plan generally uses the term STI because the goal is to prevent and treat infections before they develop into a disease state. However, the term STD is used when referring to data or information from sources that use the term STD."*<sup>1</sup>

**Why This Is Important:** The incidence of STIs is on the rise at an alarming rate. In the Community Health Assessment Chlamydia, Syphilis, and Gonorrhea were identified as the three most commonly reported sexually transmitted infections. Infection with Chlamydia, syphilis, and Gonorrhea can lead to serious health issues, including damage to the reproductive system, difficulty conceiving (Chlamydia), impacts on the heart, brain, and other organs (Syphilis), and serious impacts on an unborn child. From 2016 to 2020, Sutter County has seen a twelve-fold increase in the rates of syphilis.



### References

1. Health and Human Services. Sexually Transmitted Infections National Strategic Plan for the United States | 2021–2025. 2021; <https://www.hhs.gov/sites/default/files/STI-National-Strategic-Plan-2021-2025.pdf>

# Community Health Improvement Plan | Reducing Sexually Transmitted Infections

Overview

Data & Information

Workgroup Plan:  
Objective 1

Workgroup Plan:  
Objective 2

## DATA & INFORMATION: SEXUALLY TRANSMITTED INFECTIONS

**Table 1: Gonorrhea Infections per 100,000 (2020)**

California	Sutter County	United States
199.0	150.3	206.5

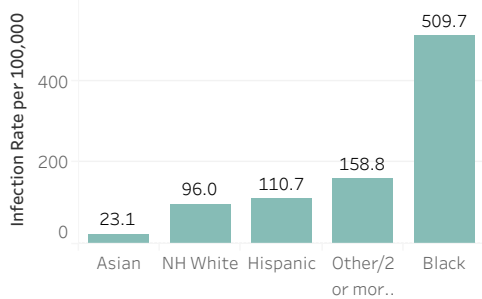
**Table 2: Syphilis Infections per 100,000 (2020)**

California	Sutter County	United States
19.5	28.7	12.7

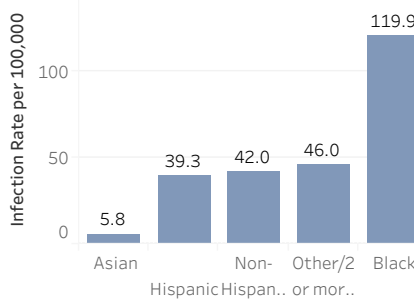
**Table 3: Chlamydia Infections per 100,000 (2020)**

California	Sutter County	United States
542.7	313.2	539.9

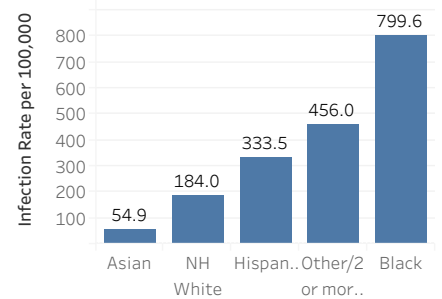
**Figure 1: Average Yearly Rates of Gonorrhea by Race/Ethnicity, 2016-2020**



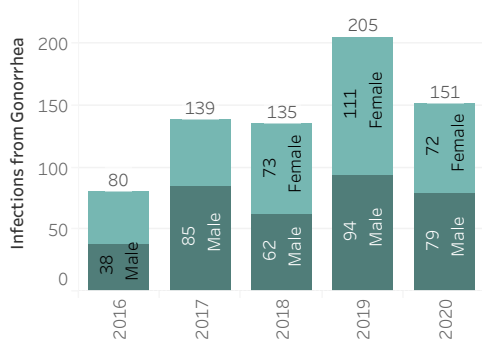
**Figure 2: Average Yearly Rates of Syphilis by Race/Ethnicity, 2016-2020**



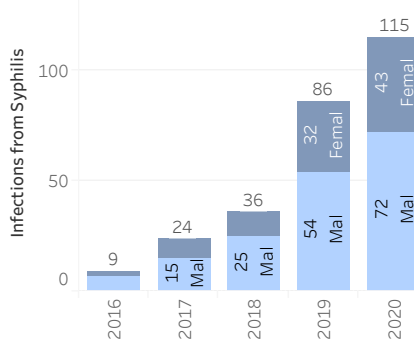
**Figure 3: Average Yearly Rates of Chlamydia by Race/Ethnicity, 2016-2020**



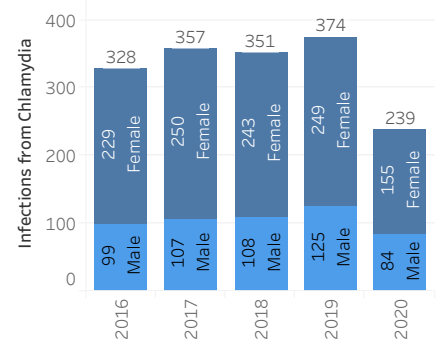
**Figure 4: Gonorrhea C among Sutter County Residents, 2016-2020**



**Figure 5: Syphilis among Sutter County Residents, 2016-2020**



**Figure 6: Chlamydia among Sutter County Residents, 2016-2020**



# Community Health Improvement Plan | Reducing Sexually Transmitted Infections

Overview	Data & Information	Workgroup Plan: Objective 1	Workgroup Plan: Objective 2
----------	--------------------	--------------------------------	--------------------------------

## WORKGROUP PLAN: OBJECTIVE 1

**Objective 1:** By January 30, 2026, all local outpatient providers will implement STI partner services and linkages to care at all clinical sites

STRATEGIES	ACTIONS	LEAD ENTITIES	TARGET DATE	ANTICIPATED PRODUCT OR RESULT
Implement streamlined partner services at initial contact with patient and provide services and/or counseling and no-cost partner treatment to reduce barriers to accessing STIs care	Expand availability of condoms and point-of-care STI tests	Ampla Health, Harmony Health, Sutter Medical Foundation, Peach Tree Health	January 1, 2026	Increased number of point-of-care test ki..
	Implement telehealth policy and transportation services ..			Telehealth and transportation services a..
	Implement STI testing as a part of routine preventative services consistent with the Centers for Disease Control and Prevention (CDC) and United States Preventive Services Taskforce (USPSTF) guidelines			STI screening testing implemented within the clinical workflow consistent with CDC and USPSTF guidelines
	Identify, at the time of patient contact, sexual contacts of patients to provide timely assessment of partner(s) and appropriate linkages for testing and treatment			Clear procedures and protocols for partner linkages to care for outpatient providers
Build learning & implementation collaborative between local outpatient providers & Sutter County Public Health	Form the STI Learning Collaborative	Ampla Health, Harmony Health, Peach Tree Health, Sutter County Public Health, and Sutter Medical Foundation, STI Learning Collaborative	August 30, 2023	Establish collaborative charter and hold regular monthly meetings
	Discuss and come to consensus on concise STI management guidelines to share with all local healthcare providers		January 1, 2024	A set of agreed upon national and state guidelines to share consistently to local healthcare providers
	Create a standardized approach, across all local outpatient providers, for routine STI testing, preventative services, treatment, and partner treatment services		January 1, 2026	Increased STI routine testing and partner linkages to care compared to 2023 baseline rates
Expand training for healthcare providers and other outpatient staff	Create a timeline for provider post-education training topics	Ampla Health, Harmony Health, Peach Tree Health, and Sutter Medical Foundation, STI Learning Collaborative	September 1, 2023	Documented timeline of provider post-education topics
	Improve and extend case managers training to all staff and encourage annual training		TBD	Increase in number of staff with case management training and knowledge compared to baseline

# Community Health Improvement Plan | Reducing Sexually Transmitted Infections

Overview	Data & Information	Workgroup Plan: Objective 1	Workgroup Plan: Objective 2
----------	--------------------	--------------------------------	--------------------------------

## WORKGROUP PLAN: OBJECTIVE 2

**Objective 2:** By 2026, implement an age based STI education curriculum targeted to at least 50% Sutter County High Schools and institutions of higher learning such as Yuba College

STRATEGIES	ACTIONS	LEAD ENTITIES	TARGET DATE	ANTICIPATED PRODUCT OR RESULT
Update the age based STI education curriculum	Involve students in curriculum building to ensure an engaging and age-based curriculum is created	Sutter County Superintendents of Schools, Local Outpatient Providers, Sutter County Public Health	January 1, 2024	Age-based STI education curriculum that incorporates local youth's perspectives and inputs
	Consolidate resources at the local level that are created by all healthcare systems in the area	Sutter County Public Health and Local Outpatient Providers	January 1, 2025	A consolidated list of resources to be distributed with the implementation of the new curriculum
Develop a collaborative subworkgroup to standardize curriculum, compile and provide relevant local data, and to build a communication strategy	Engage school leaders, staff, and students to showcase the need for updated STI learning curriculum by outlining requirements from the state and local statistics	Sutter County Superintendents of Schools, Local Outpatient Providers, Sutter County Public Health	January 1, 2025	Increased awareness and need for an updated STI learning curriculum
	Establish a timeline of when to provide the curriculum to students and how it will fit into existing curricula for other subjects	Sutter County Superintendents of Schools	January 1, 2026	Documented timeline of curriculum implementation by age groups and time of year
	Build and maintain a platform for communication with youth and other members of the community	Sutter County Superintendents of Schools, Local Outpatient Providers, Sutter County Public..	June 1, 2025	Platform to provide STIs related educational information that is age-appropriate
	Develop a social media strategy to provide evidence-based STI prevention education and to re-introduce topics discussed in the curriculum	Sutter County Superintendents of Schools, Local Outpatient Providers, Sutter County Public Health	June 1, 2025	Ensure that intentional and timely messaging is distributed to community members